



VALLA 1725-22 SE MOBILE CRANE MAX CAPACITY 10 t



PROPULSION: by 10 kW-48 V DC fanned reversible electric motor fitted with a MOSFET speed control. Foot operated service brakes. Hand hydraulically operated brakes. Motor temperature, speed, brushes automatic check devices.

TRANSMISSION: differential axle with reduction gear between motor and wheels. Speed to 6 mph.

STEERING: power steering hydraulically operated.

BATTERY: 960 Ah-48 V battery meter on dashboard.

SUSPENSION: oscillating rear axle.

CRANE FRAME: fabricated from preformed and welded steel plate with built in counterweight. Standard carry deck. Four hydraulically independently operated oblique outriggers.

WHEELS: rear two 3.00 x 15" solid pneumatic; front: two 3.00 x 15" solid pneumatic.

BOOM: fabricated from preformed and welded steel plate with 3 hydraulic telescoping sections. Fitted with adjustable nylon wear pads. Incorporated manual extension 360° slewing.

HYDRAULIC SYSTEM: main electric 8 kW - 48 V CC, gear pump through proportional distributor controlled by joystick, outriggers, turntable control (simultaneous for two crane functions), filter and safety valves.

DRIVER'S PROTECTION: a steel frame over driver's seat allowing full visibility with metal checker plate overhead.

TOTAL MACHINE WEIGHT: 11500 Kg.

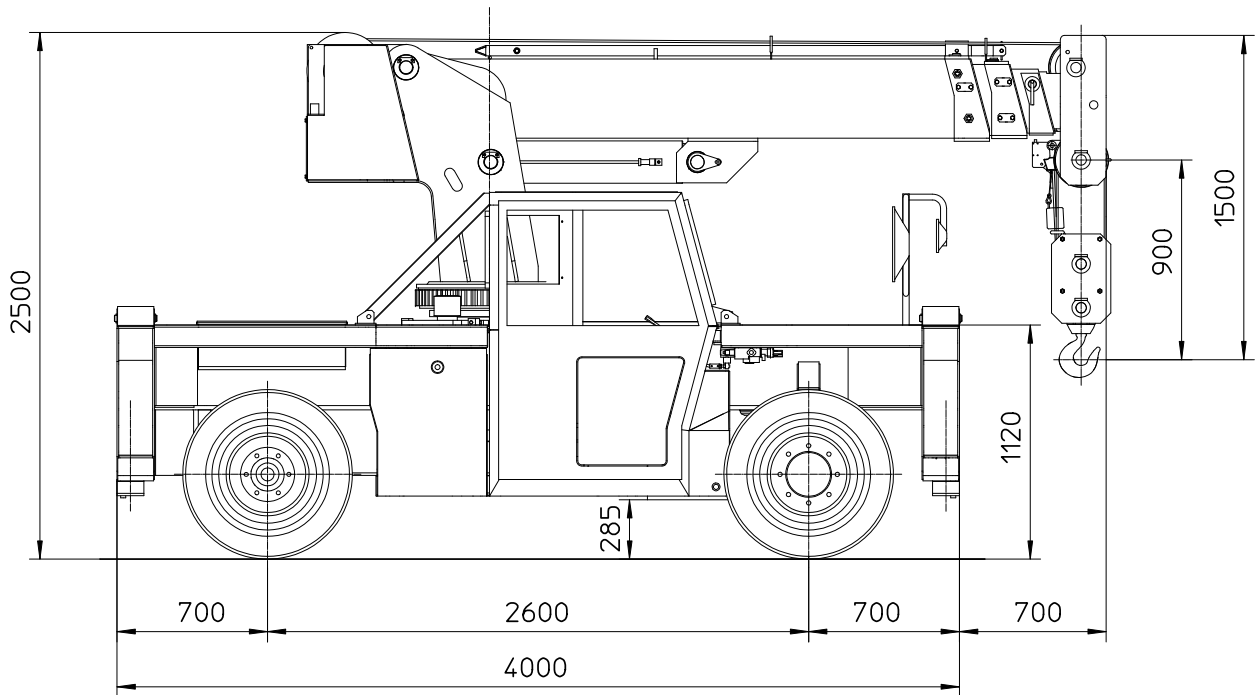
OPTIONAL EXTRAS: L.M.I. (Load Moment Indicator with angle, boom extension indicators and visible warnings for max capacity), boom manual extension, 4 WS, swingaway Jib extension (0°-45°), man bucket, remote control, enclosed cab, battery, battery charger.

Valla S.p.A.

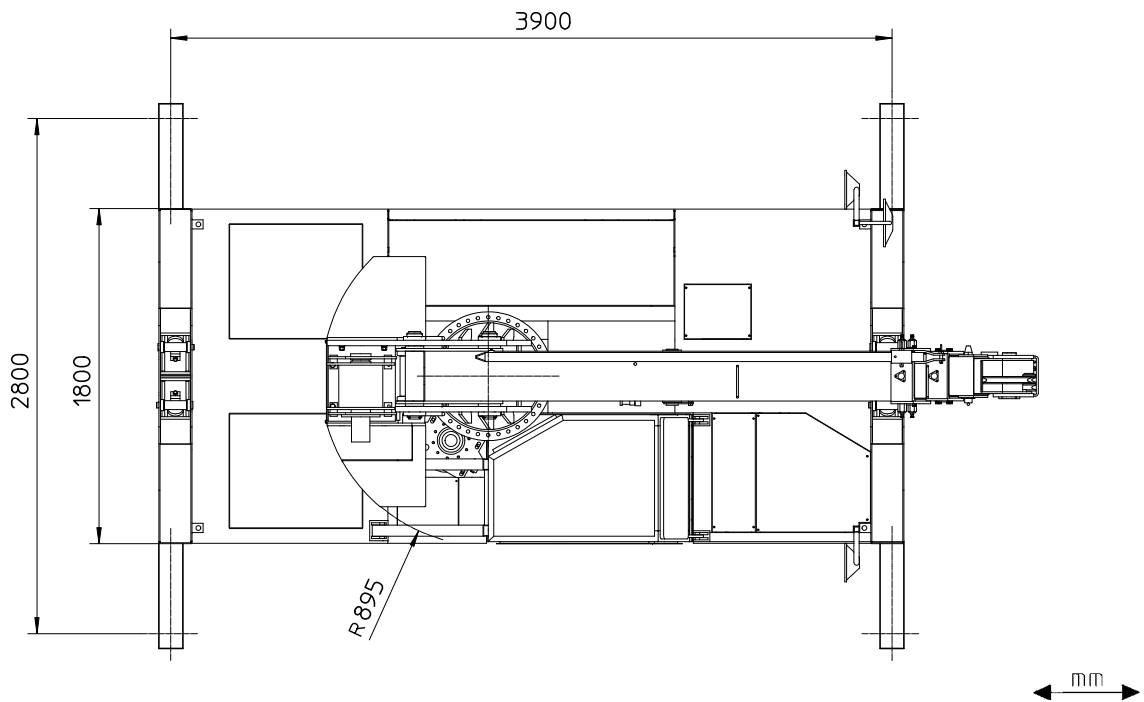
Via Piacenza, 45 - 29010 Calendasco - Piacenza - ITALIA
Tel. 0039 0523 762025 - 762004 - Fax 0039 0523 760531
Internet: www.valla.com - email: info@valla.com

The crane complies with following international standards:

- I.S.P.E.S.L.
- DIN 15018 (1,3) - 15019 (1) class H 2 B3
- ANSI - 1994
- 98/37/CE
- 89/336/CE and successive modification



VALLA MODEL 1725-22/SE



Valla S.p.A.

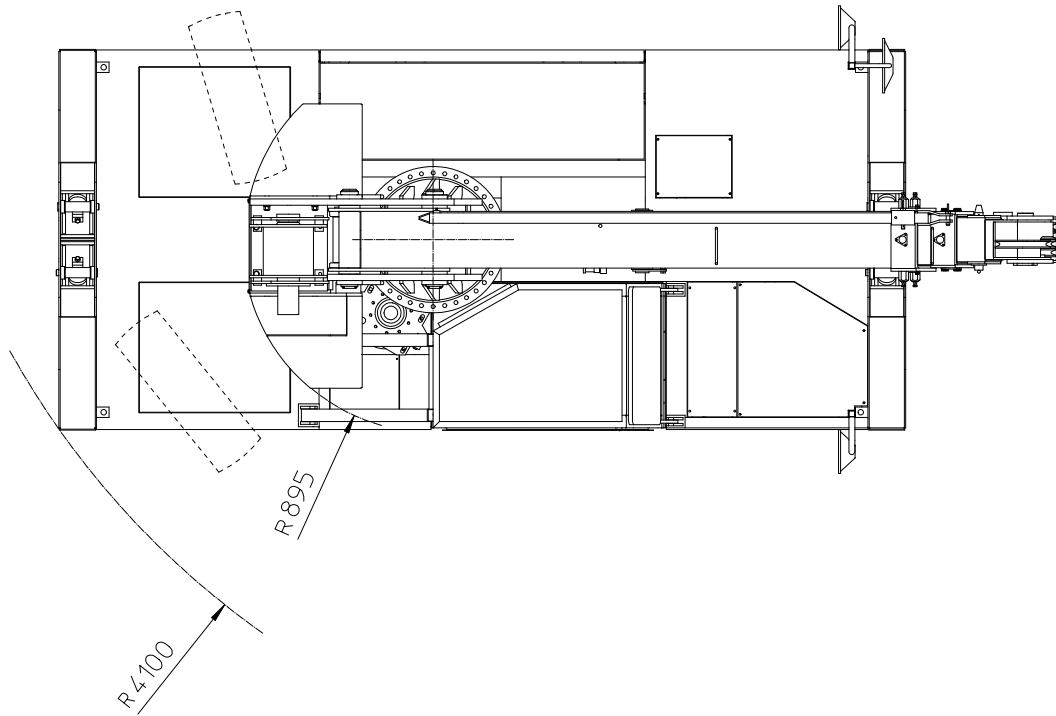
Via Piacenza, 45 - 29010 Caldasco - Piacenza - ITALIA
Tel. 0039 0523 762025 - 762004 - Fax 0039 0523 760531
Internet: www.valla.com - email: info@valla.com



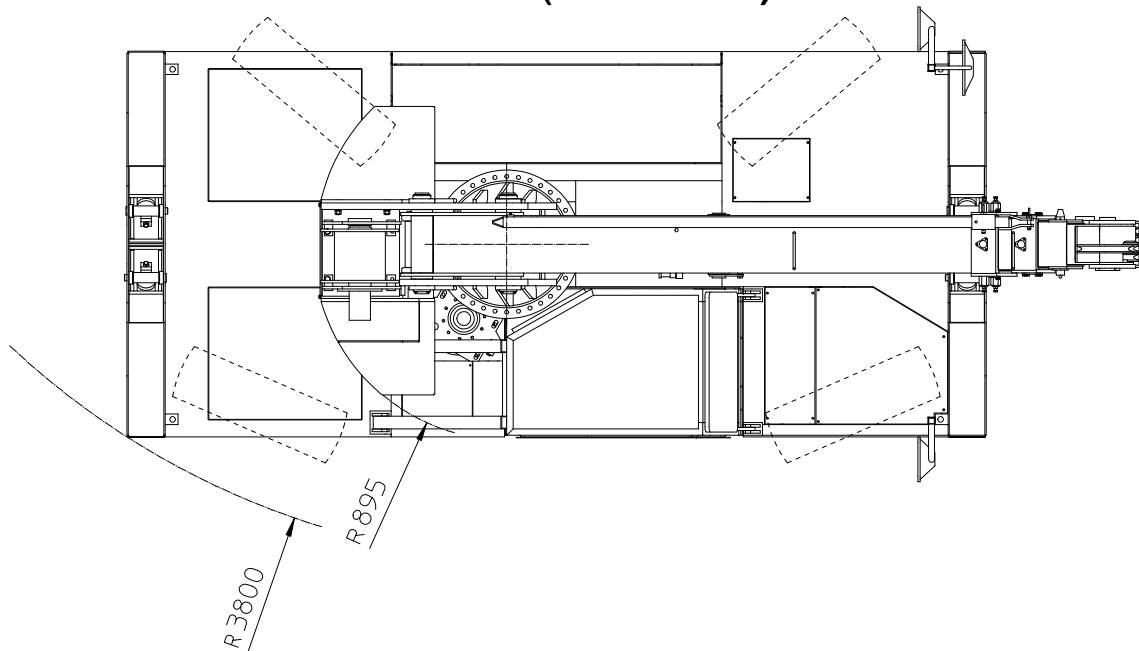


VALLA 1725-22 SE MOBILE CRANE

2 WS



4 WS (OPTIONAL)



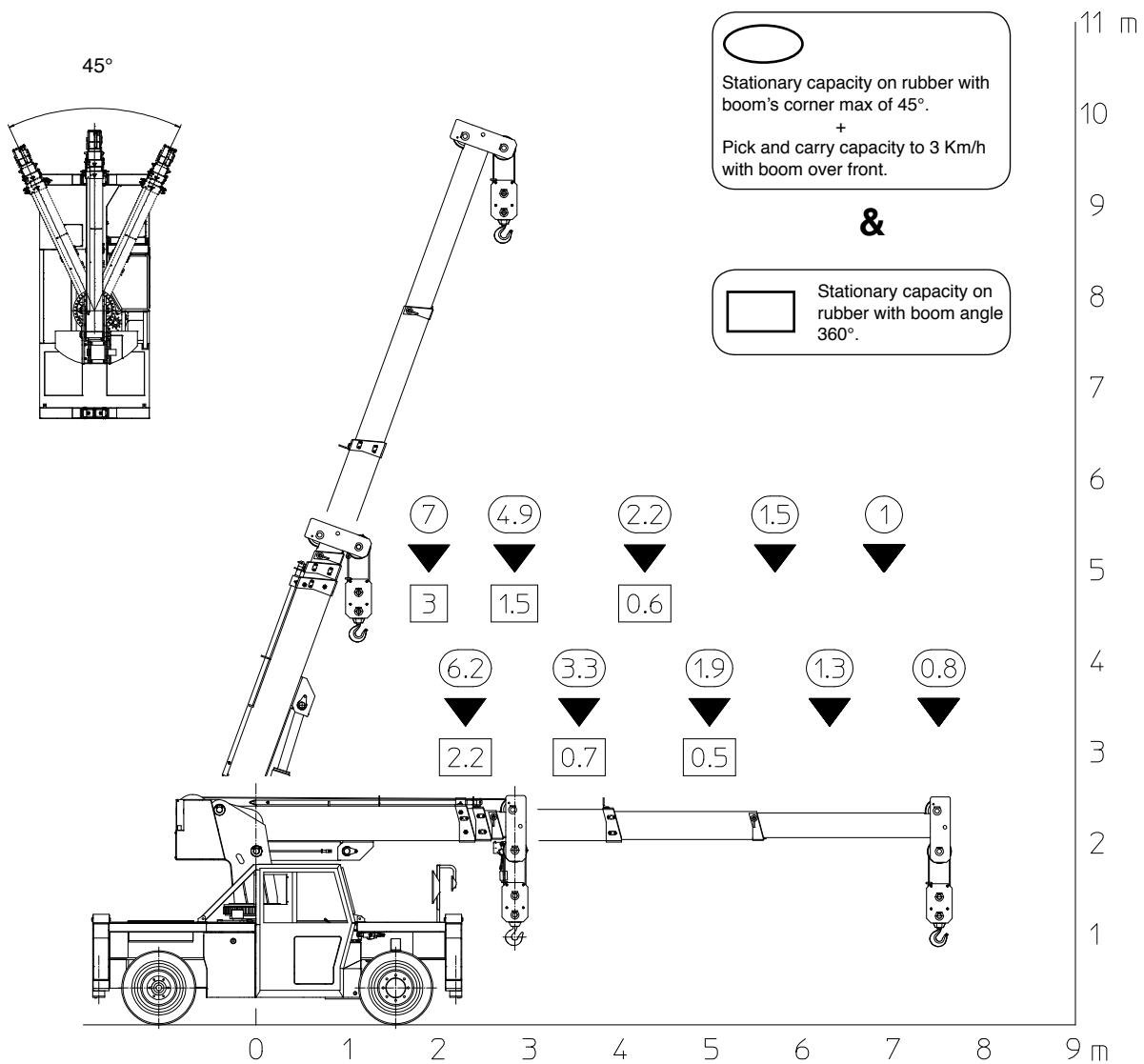
Valla S.p.A.

Via Piacenza, 45 - 29010 Calendasco - Piacenza - ITALIA
Tel. 0039 0523 762025 - 762004 - Fax 0039 0523 760531
Internet: www.valla.com - email: info@valla.com

The crane complies with following international standards:

- I.S.P.E.S.L.
- DIN 15018 (1,3) - 15019 (1) class H 2 B3
- ANSI - 1994
- 98/37/CE
- 89/336/CE and successive modification

VALLA MODEL 1725-22/SE



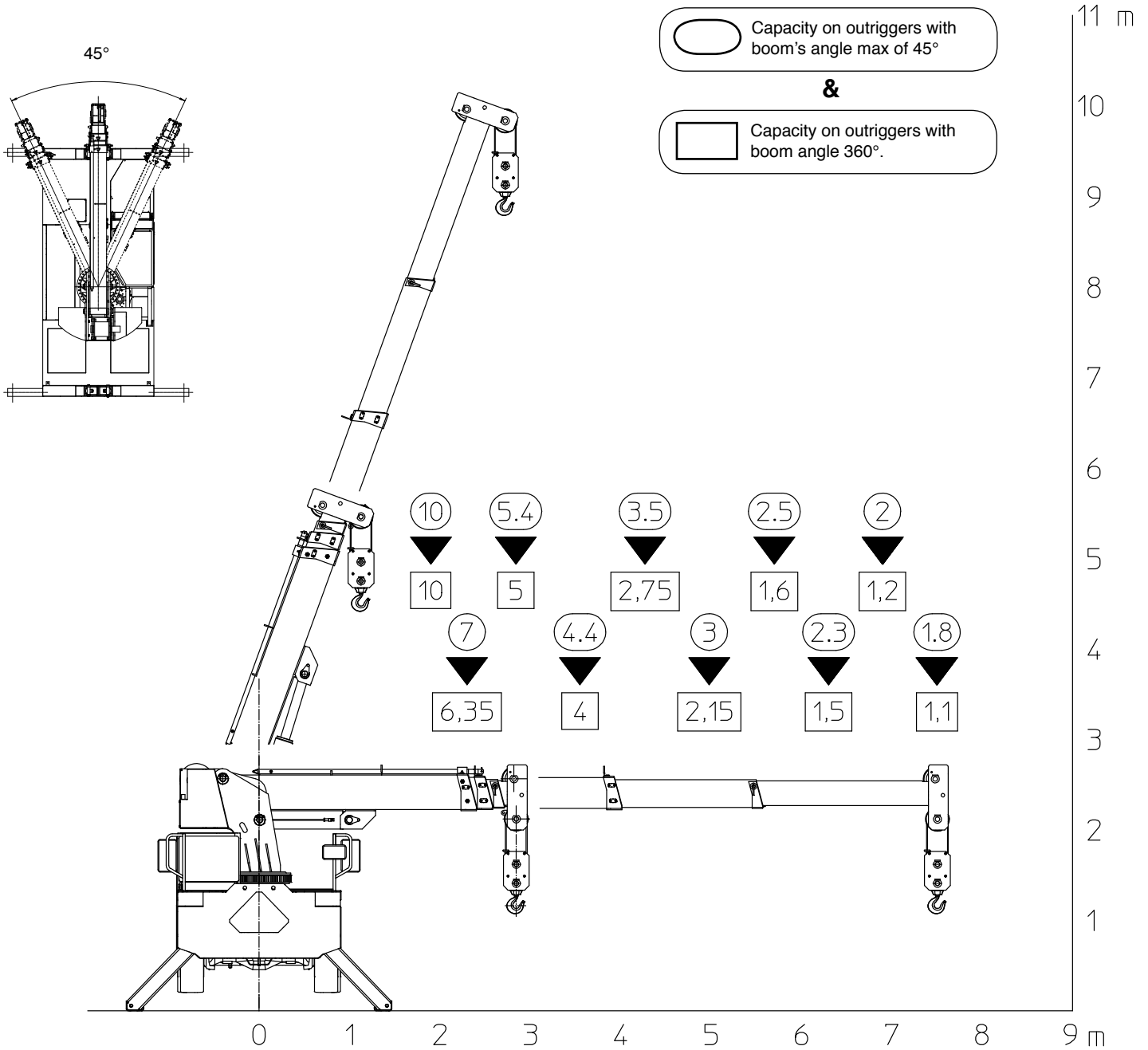
Valia S.p.A.

Via Piacenza, 45 - 29010 Calendasco - Piacenza - ITALIA
Tel. 0039 0523 762025 - 762004 - Fax 0039 0523 760531
Internet: www.valia.com - email: info@valia.com





VALLA 1725-22 SE MOBILE CRANE



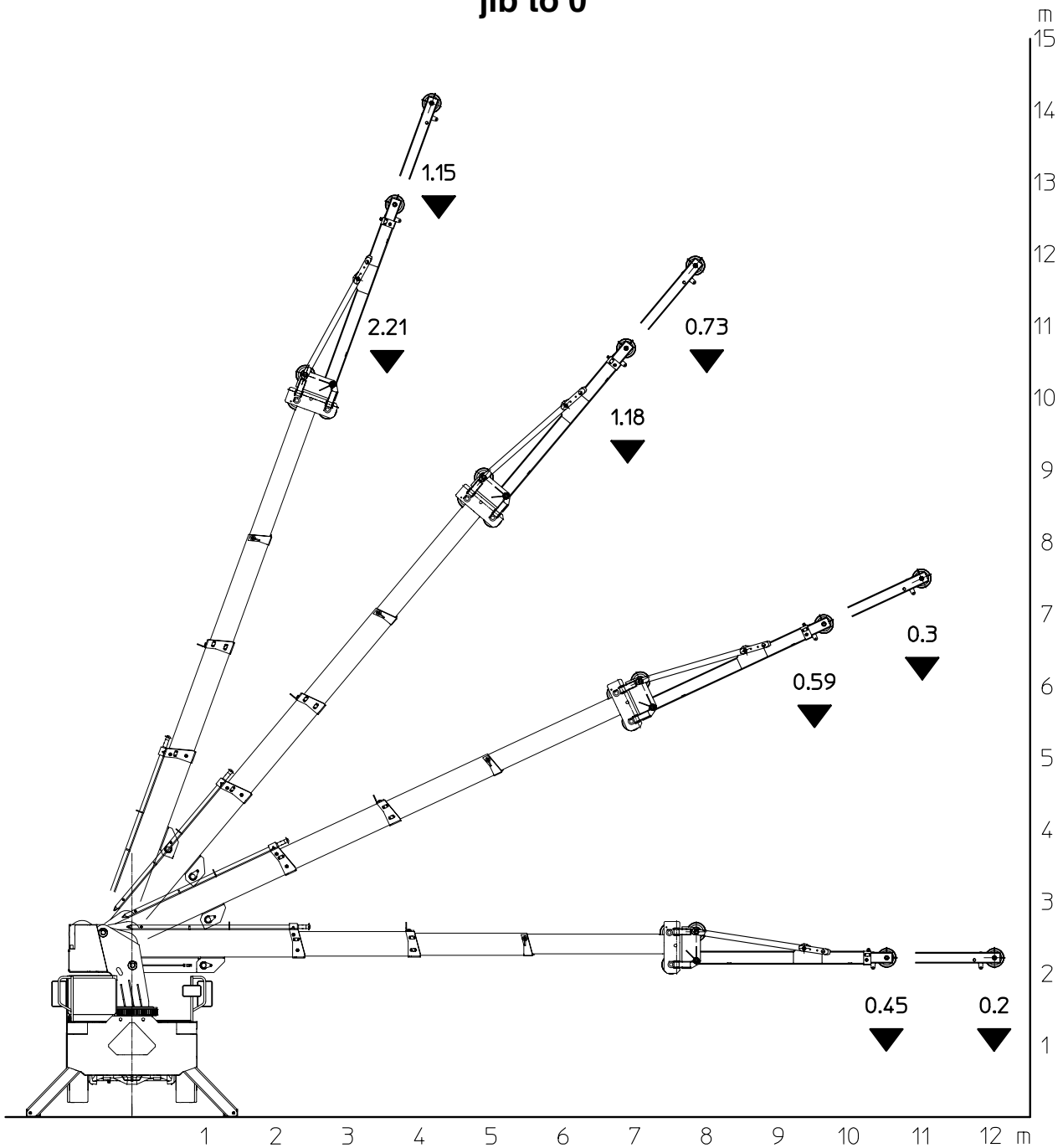
Valla S.p.A.

Via Piacenza, 45 - 29010 Caldasco - Piacenza - ITALIA
 Tel. 0039 0523 762025 - 762004 - Fax 0039 0523 760531
 Internet: www.valla.com - email: info@valla.com

The crane complies with following international standards:

- I.S.P.E.S.L.
- DIN 15018 (1,3) - 15019 (1) class H 2 B3
- ANSI - 1994
- 98/37/CE
- 89/336/CE and successive modification

jib to 0°



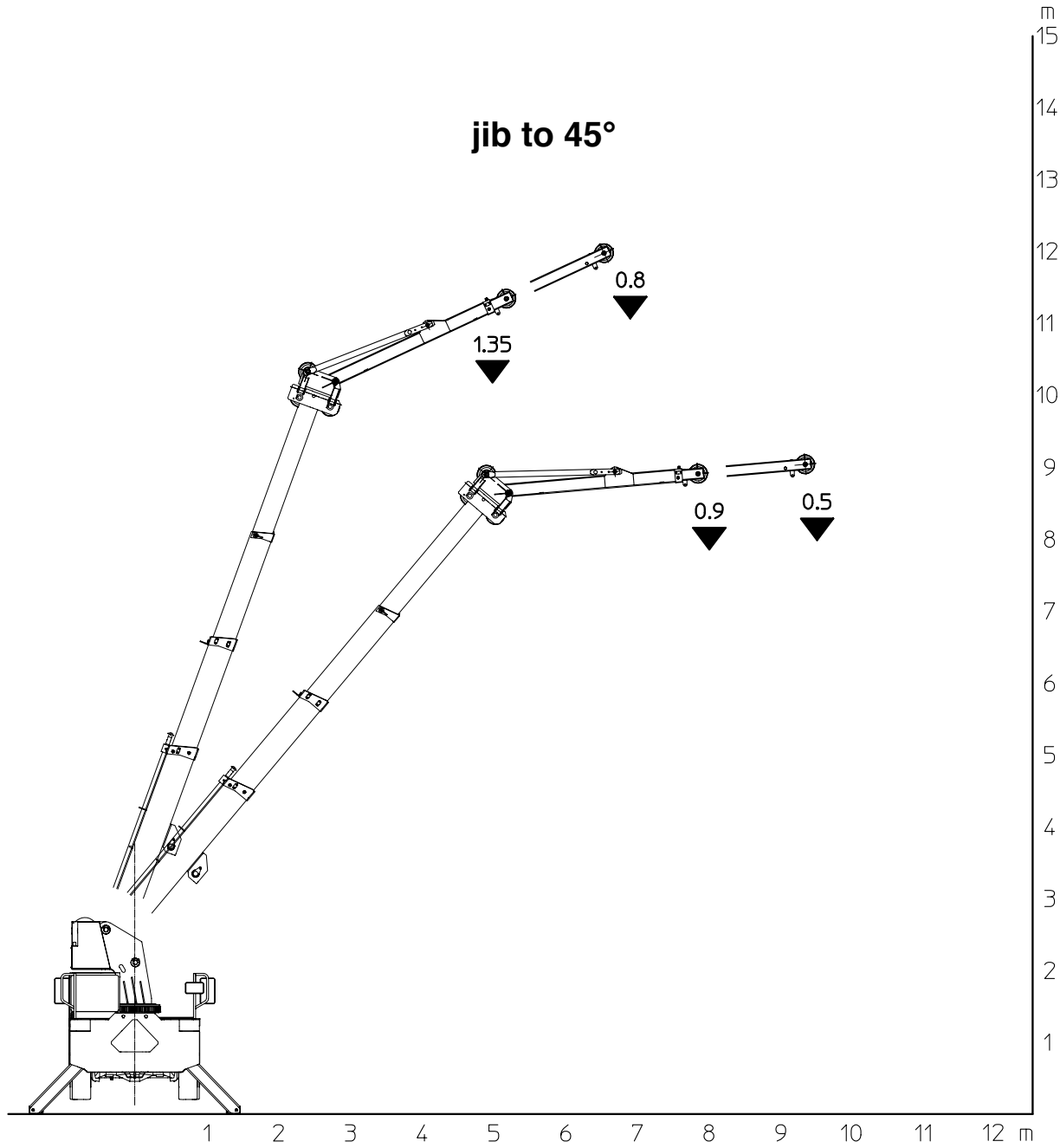
Valla S.p.A.

Via Piacenza, 45 - 29010 Calendasco - Piacenza - ITALIA
Tel. 0039 0523 762025 - 762004 - Fax 0039 0523 760531
Internet: www.valla.com - email: info@valla.com





VALLA 1725-22 SE MOBILE CRANE



LIFTING CAPACITY MOD. 1725-22/SE-SD

RADIUS (mt)	ON OUTRIGGERS				ON RUBBER				
	360°	OVER FRONT (max 45°)	WITH JIB 360°				STATIONARY CAPACITY OVER FRONT (max 12°)	STATIONARY CAPACITY 360°	PICK AND CARRY CAPACITY UP TO 3 km/h (boom over front)
			0° retracted	45° retracted	0° extended	45° extended			
1.90	10.000	10.000					7.000	3.000	7.000
2.30	6.350	7.000	2.390				6.200	2.200	6.200
2.85	5.000	5.400	2.240		1.410		4.600	1.500	4.900
3.55	4.000	4.400	2.210		1.320		3.300	700	3.300
4.30	2.750	3.500	1.870	1.530	1.150		2.200	600	2.200
5.00	2.150	3.000	1.700	1.400	1.040		1.900	500	1.900
5.70	1.600	2.500	1.530	1.280	960	840	1.500		1.500
6.30	1.500	2.300	1.400	1.180	910	820	1.300		1.300
6.90	1.200	2.000	1.180	1.100	870	800	1.000		1.000
7.50	1.100	1.800	1.020	990	840	780	800		800
8.00			870	900	730	750			
8.50			770	830	650	710			
9.00			670		580	620			
9.50			590		520	500			
10.0			500		460	450			
10.5			450		390				
11.0					300				
11.5					250				
12.0					200				

- Rated loads above do not exceed 80% of tipping loads on outriggers and 75% on rubber.
- Capacities above bold lines are based only on structural strenght of crane.
- Capacities and performances are for crane on firm, level surfaces.
- Pick and carry operation: boom has to be centered overfront, used in the shortest possible lenght, min radius, lowest angle, load close to the ground. Negotiating grades (max 10%) is only permitted WITHOUT LOAD and limited to short distance and time.
- When needed, outriggers must be fully extended.
- When lifting area is not clearly visible by crane's operator, the presence of a second man is mandatory for signaling.
- Never handle a load in the area above cab.